



VICTORY STEP EDUCATION SERVICES

PRIMARY LEAVING EXAMINATION BOARD

SUPER MAGIC SET ONE

2022

INTEGRATED SCIENCE

Time allowed 2hrs 30 minutes

Index No			Personal No.				

CANDIDATE'S NAME.....

SIGNATURE.....

SCHOOL NAME.....

DISTRICT NAME.....

Read the following instructions carefully

- 1.This paper has two Sections A and B
- 2.Section A has 40 Questions (40marks) and section B has 60 (60marks).
- 3.Attempt all questions in both section A And B.All questions must be written in the spaces provided
- 4.All answers must be written using blue or black ball pen or ink. Only diagrams should be drawn using a pencil
- 5.Unnecessary changes of work may lead to loss of marks
- 6.Do not fill anything in the box with "**EXAMINER'S USE ONLY**"
- 7.All handwriting that cannot easily be read may lead to loss of marks.

FOR EXAMINERS' USE ONLY		
Qn. No.	MARKS	EXRS' IN.
1 – 10		
11 – 20		
21 – 30		
31– 40		
41 – 43		
44 – 46		
47 – 49		
50 – 52		
53– 55		
TOTAL		

SECTION A

All questions in this section carry 40 marks

1. Name the injury that occurs when a ligament is torn or twisted.

.....

2. What type of skeleton is found in a worm?

.....

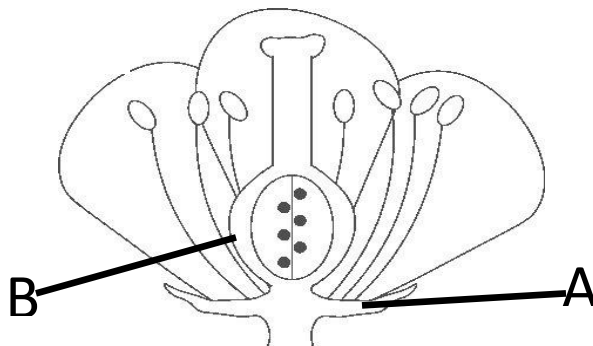
3. Which structure is used for breaking down food in the human mouth?

.....

4. State the type of bees known as "master bees" in a hive.

.....

The diagram below show a structure of a flower after fertilisation. Use it to attempt questions that follow.



5. Name the structure marked **A**.

.....

6. State **one role** of part marked with letter B to the flower.

.....

7. To which group of simple machine does a knife belong?

.....

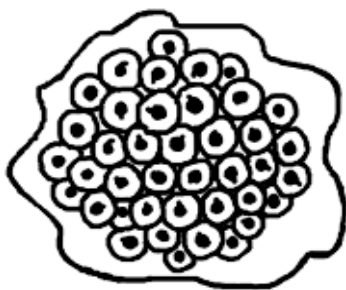
8. Give **one** example of an arachnid which is an ecto-parasite in animals.

.....

9. In which way is lightning useful in the environment?

.....

10. How is a thermos flask helpful in a home?
.....
11. Why is a fire extinguisher equipment recommended to be in schools?
.....
12. Give the type of energy possessed by a stone on the table.
.....
13. Which gas has the highest percentage in the atmosphere?
.....
14. State **any one** characteristic of seeds dispersed by wind.
.....
15. Mention **one use** of quill feathers to birds.
.....
16. Give a reason why displacement method is used to find the volume of a stone.
.....
17. How is a goat different from a snake in terms of reproduction?
.....
18. Which amphibian lays eggs as shown below?



-
19. State the process by which air circulates in a house.
.....
20. How do plants avoid overcrowding in any given place?
.....

21. Which property of air enables clothes to dry when hanged on a wire?

.....

22. Give **any one** example of electric magnet.

.....

23. Mention **any one** cattle disease caused by a virus.

.....

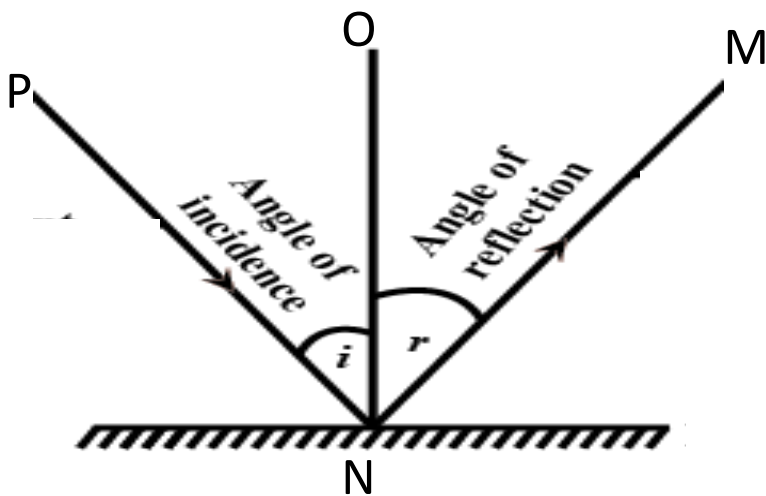
24. State **any one** population health concern that was addressed in the recently population census in Uganda.

.....

25. How do birds depend on trees?

.....

26. Name the light ray labeled **MN**.



.....

27. Mention **any one** example of a root vegetable.

.....

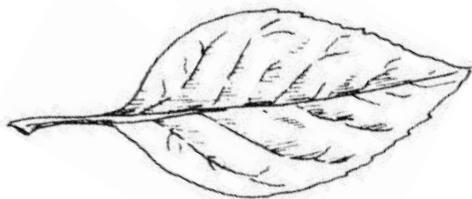
28. Write down one non-living component of the environment.

.....

29. How is transpiration important to a plant apart from cooling it?

.....

30. Why does a pencil float when put in a bucket full of water?
.....
31. How do some people become passive smokers?
.....
32. Give a reason why a maize grain is grouped under monocotyledonous seeds?
.....
33. Stat **any one result** of two naked wires carrying electric current getting in touch with one another.
.....
34. Name **any one** by-product of respiration.
.....
35. Apart from maize and sorghum, give any one example of a plant with prop roots.
.....
36. In which way is syphilis different from malaria?
.....
37. Mention **one danger** of premarital sex to teenage girls.
.....
38. Why are electric wires hung on the poles during cold weather?
.....
39. Apart from distillation, mention any other way of making alcohol.
.....
40. Write down the type of venation shown by the diagram below.
.....



SECTION B

41. How do soil pollutants lead to soil infertility?

.....

b) State **any two** examples of water pollutants.

i).....

ii).....

c) Which activity in the environment can reduce these pollutants?

.....

42.a) Apart from grafting, name **any on** other artificial methods of propagation.

.....

b) Give **any two** advantages of artificial method of vegetative propagation

i).....

ii).....

c) Apart from using suckers, how else can pineapple plant be propagated?

.....

43.a) Give **any two** farming practices a farmer does after harvesting crops.

i).....

ii).....

b) State **any two** activities a farmer does before growing the seeds in a garden.

i).....

ii).....

44.a) What is meant by the term brooding in poultry breeding?

.....

.....

b) State **any one** type of brooding.

.....

c) What advantage has hen brooding over using a brooder?

.....
d) Why do most poultry keepers prefer using brooders?
.....

45.a) Apart from food, give **any other two** products that can be got by processing wetland – natural materials..

i).....

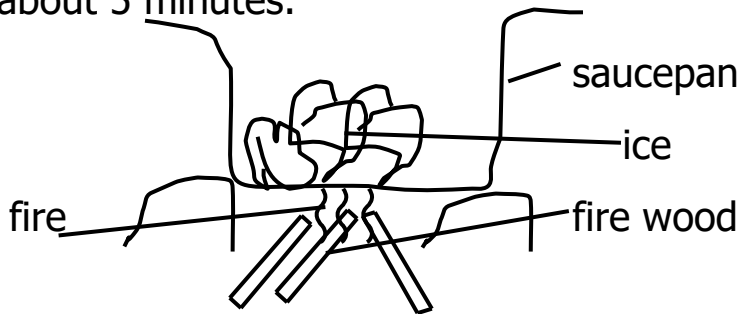
ii).....

b) Mention **two** natural materials processed to get the products named in (a) above.

i).....

ii).....

46. A P.5 child in St. Paul’s Primary school put ice in a saucepan and heated it for about 5 minutes.



a) What did the child see at the bottom of the saucepan after 5 minutes?
.....

b) What had happened to the ice?
.....

c) State the type of change which took place?
.....

d) Why is the firewood spaced in that way?
.....

47. Which part of the skeletal system protects:-

a) the heart and the lungs?

.....

b) the brain?

.....

c) the spinal cord?

.....

d) the reproductive organs?

.....

48.a) Name **three** things required by the leaves for the process of photosynthesis to take place.

i).....

ii).....

iii).....

b) Give **the importance** of osmosis to flowering plants.

.....

49. Match the items of **list A** to those in **list B**.

List A

List B

Natural change

Germination

Physical change

Drought

Biological change

Condensation

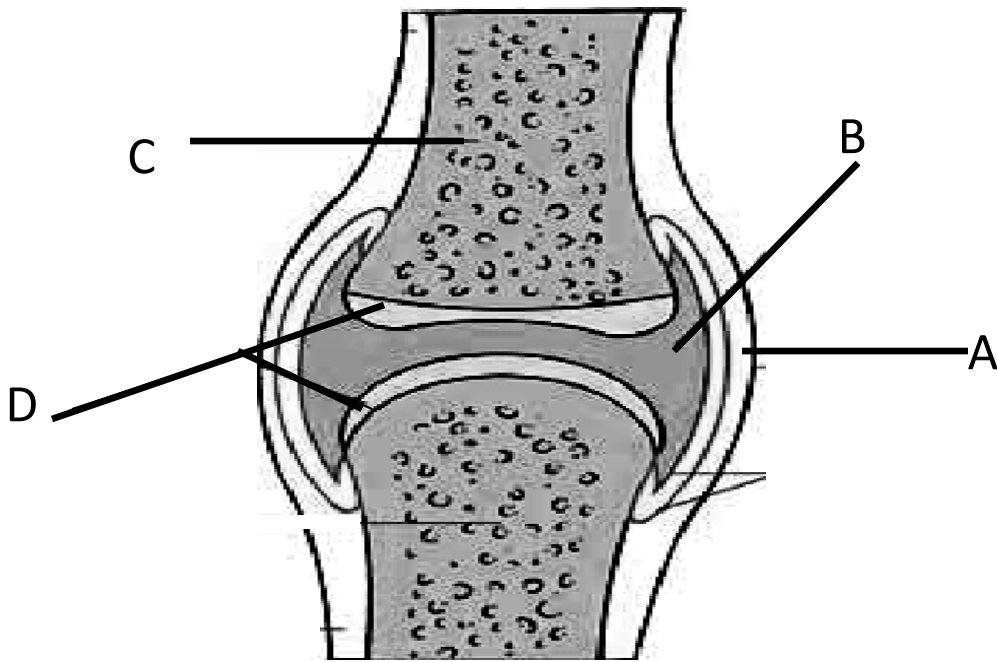
.....

.....

.....

.....

50. The diagram below is of a movable joint. Use it to answer questions.



a) Name the parts labeled:

- i) **A**
- ii) **D**

b) Give the function of the part labeled:

- i) **C**
- ii) **B**.....

51.a)Mention **any two** types of pulleys.

- i)
- ii)

b) When using a pulley, state **any two** forces which retards work.

- i).....
- ii)

52.a) A School Health Committee organized an assembly to check children’s Health at school.

What name is given to such an assembly?

.....

b) Identify **any two** activities carried out in that assembly.

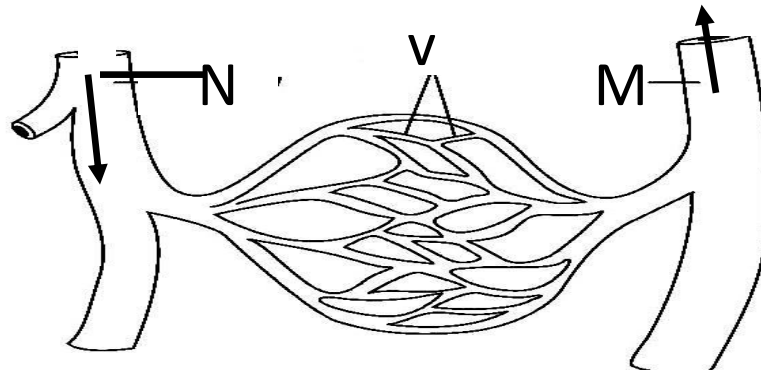
i)

ii)

e) Which element of **P.H.C** is promoted by such an assembly in schools?

.....

53. The diagram below shows how blood vessels are connected in the body tissues. Use it to answer questions about it.



a) Name the blood vessels marked:

i) **V**

ii) **N**

b) State the function the blood vessels marked **M**.

.....

c) Apart from dropping carbondioxide, what other activity connected to blood circulation occurs in the lungs?

.....

54.a)What causes marasmus in children?

.....

b) State **any three** indicators of marasmus in children.

i)

ii)

iii)

55.a)Give one effect of anti – social behavior.

.....

b) Give **any three** examples of anti – social practices in the community.

i)

ii)

iii)

